

Forged Steel Sheave Wheels

Forged Steel Sheave Wheels are available in the wide range of standard sizes shown below. In addition, wheels to meet your special design requirements can be produced in virtually any size, configuration and surface finish condition. We maintain a large inventory of carbon and alloy steels to meet your specific needs.

Forged Wheels are available in any surface hardness up to 62 RC including our standard heat treatments.

- Untreated, Annealed, Normalized
- Rim Toughened (34-40 RC)
- Deep Hardened (Up to 62 RC)
- Super Tough AISI-4140



Sheave Wheels Dimensional Data

Wheel Section Number	Nominal Weight lbs.	Rope Dia.	Outside Dia. D	Pitch Dia. A	Root Dia. B	Rim Width L	Groove Radius C	Rope Wall (Min.) E	Clearance Offset F	Groove Depth G	Hub Dia. O	Hub Length P	Hub Projection R	Standard Rough Bore (Min.)
WSW-162	100	1/2	16	15	14-1/2	1-3/4	9/32	1/2	1/32	3/4	8	3-1/2	7/8	3
WSW-202	150	5/8	20	18-3/4	18-1/8	2	11/32	5/8	1/32	15/16	9-1/2	3-1/2	3/4	4
WSW-222	170	5/8	21-3/4	20-1/2	19-7/8	2	11/32	5/8	1/32	15/16	9-1/2	3-1/2	3/4	4
WSW-242	235	3/4	24	22-1/2	21-3/4	2-1/4	13/32	3/4	1/32	1-1/8	11	3-1/2	5/8	4
WSW-262	255	3/4	26	24-1/2	23-3/4	2-1/4	13/32	3/4	1/32	1-1/8	11	3-1/2	5/8	4
WSW-282	315	7/8	28	26-1/4	25-3/8	2-1/2	31/64	7/8	3/64	1-5/16	12	3-3/4	5/8	5-1/4
WSW-302	355	7/8	30	28-1/4	27-3/8	2-1/2	31/64	7/8	3/64	1-5/16	12	3-3/4	5/8	5-1/4
WSW-322	420	1	32	30	29	2-3/4	35/64	1	3/64	1-1/2	12-1/2	3-3/4	1/2	5-1/4
WSW-342	430	1	34	32	31	2-3/4	35/64	1	3/64	1-1/2	12-1/2	3-3/4	1/2	5-1/4
WSW-362	560	1-1/8	36	33-3/4	32-5/8	3	39/64	1-1/8	3/64	1-11/16	14	4	1/2	5-1/4
WSW-382	675	1-1/8	38-1/4	36	34-7/8	3	39/64	1-1/8	3/64	1-11/16	14	4	1/2	5-1/4
WSW-402	795	1-1/4	40	37-1/2	36-1/4	3-1/4	11/16	1-1/4	1/16	1-7/8	14	4-1/4	1/2	5-1/4
WSW-422	860	1-1/4	42-1/2	40	38-3/4	3-1/4	11/16	1-1/4	1/16	1-7/8	14	4-1/4	1/2	5-1/4
WSW-442	975	1-3/8	44	41-1/4	39-7/8	3-1/2	3/4	1-3/8	1/16	2-1/16	14	4-1/2	1/2	5-1/4
WSW-482	1100	1-1/2	48	45	43-1/2	3-3/4	13/16	1-1/2	1/16	2-1/4	15	4-3/4	1/2	5-1/4

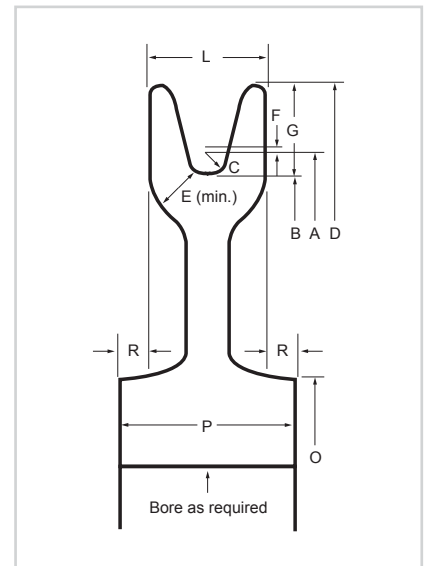
Standard Wheel Tolerances * (Inches)

Dimension	Crane Track Wheels				Industrial Wheels		Sheave Wheels	
	Rough Machined		Finished Machined		Standard Finish Rough Bore		Standard Finish Rough Bore	
	Max.	Min.	Max.	Min.	Max.	Min.	Max.	Min.
Wheel Dia.****	+1/8	-1/8	+1/64	-1/64	+3/16	-1/16	N/A	N/A
Wheel Cir.**	N/A	N/A	N/A	N/A	+4 Tapes***	-1 Tapes***	N/A	N/A
Rim Outside Dia.	N/A	N/A	N/A	N/A	N/A	N/A	+1/16	-1/8
Root Dia.	N/A	N/A	N/A	N/A	N/A	N/A	+3/16	-0
Flange Height	+1/16	-1/16	+1/16	-1/16	+1/16	-1/16	N/A	N/A
Flange Thickness	+3/16	-1/16	+1/32	-1/32	+1/16	-1/16	N/A	N/A
Rim Thickness	N/A	N/A	N/A	N/A	+3/8	-3/16	N/A	N/A
Rim Width	+3/16	-1/16	+1/16	-1/16	+1/8	-1/8	+1/8	-1/8
Hub Length	+1/8	-1/8	+1/16	-1/16	+3/8	+1/8	+3/8	+1/8
Hub Dia.	+1	-1/4	+1	-1/4	+1	-1/4	+3/4	-1/4
Hub Proj. or Depr.	N/A	N/A	N/A	N/A	+1/8	-1/8	+3/16	-1/16

Minimum Hub Wall Thickness

Bores 7" diameter and under, hub wall 1" minimum. Bores over 7" diameter, hub wall 1-1/4" minimum

Values listed on tables are in inches, and are McKees Rocks Forgings standards. McKees Rocks Forgings can produce wheels to most customers specification. **Wheels are mated in pairs within one tape. ***As measured by standard tapes. ****For Deep Hardened Crane Wheels standard tread diameter tolerance is +/- .010 and will be supplied with an as heat treated surface. Tighter tolerances require finish machining after heat treatment.



McKees Rocks Forgings
 75 Nichol Avenue
 McKees Rocks, Pennsylvania 15136
 Tel: 1.800.223.2818 or 412.778.2020
 Fax: 412.778.2025
 mckeesrocksforgings.com

