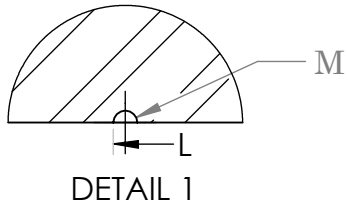
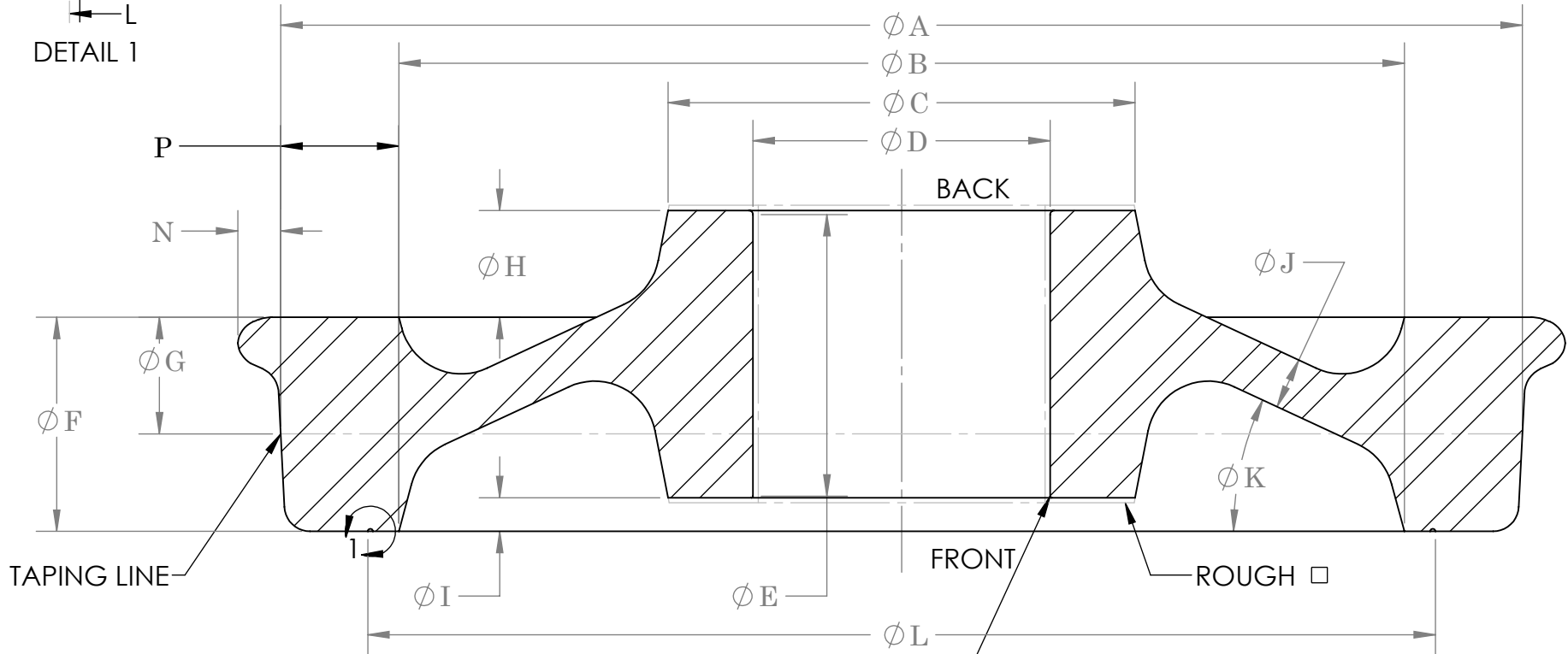


CONDEMNING GROOVE □



NOTES:

- ANY AREAS LEFT BLANK WILL BE FILLED WITH STANDARD SECTION DIMENSION.
- STANDARD TOLERANCES WILL BE APPLIED IF NOT SUPPLIED.
- ROUGH STOCK SUPPLIED AS:
 - 1/8" STOCK ADDED TO HUB AND BORE AREA
 - 1/16" STOCK ADDED TO TREAD + TAPE TOLERANCE



FINISH DIMENSIONS: [UNO]

- A = _____
- B = _____
- C = _____
- D = _____
- E = _____
- F = _____
- G = _____
- H = _____
- I = _____
- J = _____
- K = _____
- L = _____
- M = _____
- N = _____
- P = _____

REFERENCE: _____

STEEL GRADE: _____

QUANTITY: _____

HEAT TREAT REQUIREMENTS: _____

□ CHAMFER/RADIUS: _____
□ BOTH SIDES

TAPE SIZE: _____

STAMPING REQUIREMENTS: _____

	NAME	DATE
DRAWN	ZRH	4/21/17
CHECKED		
ENG APPR.		
MFG APPR.		
Q.A.		

WHEEL DESCRIPTION:		
SAMPLE INDUSTRIAL WHEEL - DIMENSION SHEET		
TITLE: Mckees Rocks Forgings Mckees Rocks Pa.		
SIZE	DWG. NO.	REV
A		

IF FRONT & BACK DIMENSIONS DIFFER MARK AS:
(FRONT) / (BACK)

PROPRIETARY AND CONFIDENTIAL
THE INFORMATION CONTAINED IN THIS DRAWING IS THE SOLE PROPERTY OF STANDARD FORGED PRODUCTS LLC. ANY REPRODUCTION IN PART OR AS A WHOLE WITHOUT THE WRITTEN PERMISSION OF STANDARD FORGED PRODUCTS LLC IS PROHIBITED.

COMMENTS: